



# SHIFT COLLECTION

Handcrafted with exceptional attention to detail, the Shift End Table seamlessly blends modern design with timeless craftsmanship. The combination of metal and wood provides a striking contrast, while the placement of the vertical elements creates an architectural cantilever effect to the top surface.

Beautiful as a stand-alone piece, or as a mirrored pair at either end of a sofa, this piece features end grain detailing, showcasing the intricate patterns and textures of the wood. This versatile design is also available as a console or cocktail table, making it a perfect addition to various spaces. The Shift End Table is not only a functional piece but also a work of art that embodies quality and sophistication.



# ADERYN

HANDMADE IN CALIFORNIA



## SHIFT COLLECTION END TABLE

DIMENSIONS: 20"W x 24"D x 24"H  
CUSTOMIZATION AVAILABLE

Solid wood with blackened steel accent and  
end grain detail at top

Shown in Mahogany with Blackened Steel

SPECIES:  
Mahogany, Ash, Oak, Charred Oak, Walnut

METAL FINISHES: Blackened Steel, Bronze Patina or  
Brushed Brass

OTHER VARIATIONS AVAILABLE:  
Cocktail Table and Console Table



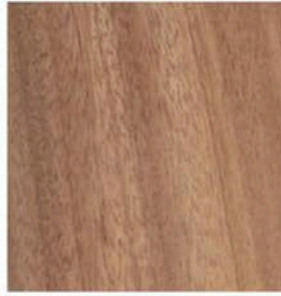


# SHIFT COLLECTION FINISHES

## WOODS



Ash



Mahogany\*



Medium on Oak



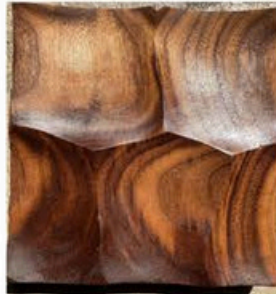
Large on Oak



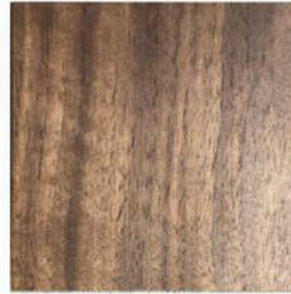
Oak



Medium on Walnut



Large on Walnut



Walnut



Small on Charred Oak



Medium on Charred Oak



Large on Charred Oak

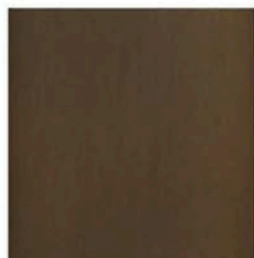


Charred Oak

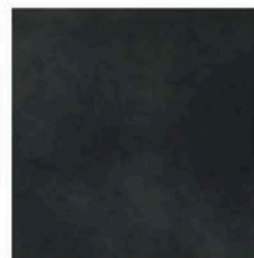
## METALS



BRUSHED BRASS



BRONZE PATINA ON BRASS



BLACKENED STEEL