

APOGEE COLLECTION

The Apogee dining table base is a masterpiece of sculptural elegance and meticulous craftsmanship. The name "Apogee" is derived from the point in an orbit most distant from the earth, representing the pinnacle or highest point of something. This concept is elegantly embodied in the design of the Apogee table base, with its soaring lines and graceful curves that reach their zenith at the crest of its form.

The interior of the Apogee base is hand-sculpted and finished with a high-gloss metallic finish, creating a stunning visual contrast against the rich, natural wood grain that encases it. This interplay between the gleaming metallic interior and the warm, organic exterior symbolizes the union of modern sophistication and timeless natural beauty.

ADERYN

HANDMADE IN CALIFORNIA



APOGEE COLLECTION DINING TABLE BASE

DIMENSIONS: 48" L X 22" W X 29.5" H (STANDARD)
CUSTOMIZABLE UP TO 96" L X 26" W

*Shown in Rift Walnut Dark exterior with High
Gloss Brass interior*

FINISHES AVAILABLE:

Wood exterior: Rift Walnut, Rift Walnut Dark, Rift Oak

High Gloss Interior: Blackened Brass, Brass, Pewter, Pearl, Nickel, Champagne

OTHER VARIATIONS AVAILABLE:

Console table. Cocktail table

Note: Glass top can be included in quote upon request. Base can be fabricated to receive a stone or wood top. Please contact for coordination details.



APOGEE FINISHES

EXTERIOR WOOD OPTIONS



Oak*



Ebony Oak



Mahogany*



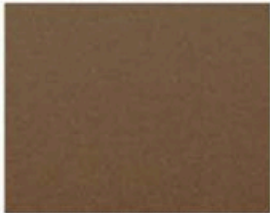
Rift Walnut Dark



Walnut*

*Custom Stain available upon request

INTERIOR METALLIC OPTIONS



Blackened Brass



Brass



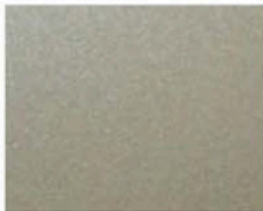
Pewter



Pearl



Nickel



Champagne

